

PHOTO: ROSS MARDEN



Two for TWO FOUR TWO

For more than 30 years Launceston-based Alan Livermore has been designing and crafting fine furniture. Trained as a teacher, Alan divides his time between his own designing and his contribution to education through working closely with the Australian School of Fine Furniture.

Alan's specialty is veneer work, and during the early 1980s he was one of a small group of craftspeople who re-introduced into the state the skills of veneering in small workshops. 'Veneering is a much better utilisation of materials,' explains Alan. 'And, in addition, it allows much more flexibility during the design process.' Although there was some hammer veneering, there were few veneer presses.

He also creates commissioned pieces and one-off designs for specific purposes. His designs – innovative yet functional – have received many awards and he is rated as one of Tasmania's top furniture designers.

Situated in historic Charles Street, a few minutes from the heart of Launceston, you can find TWO FOUR TWO. It was here, early in December 2004, that Katie and Alan Livermore opened their doors to the public. 'My dream had been to have an outlet for my furniture through a showroom,' says Alan. This evolved into more than simply a retail outlet.

Throughout 2005 three serviced apartments took shape and the accommodation side of the venture became a reality. Alan focused on a similar design theme for all three apartments, using a different native timber for each. Each apartment has its own distinctive look, in 'Tasmanian oak' (eucalypt), blackwood and myrtle respectively.

Throughout the premises fine craftsmanship can be enjoyed across a range of native timbers, from a stunning blackwood and stainless steel spiral staircase to perfectly interlocking 'Tasoak' dovetail joints in the kitchen drawers.

WRITER
Alice Hansen

PHOTOGRAPHER
Katie Livermore

Visitors enjoy Alan's flair and creativity during their stay and can test the functionality of his designs. 'We have had guests who have stayed with us and then purchased the bed and bedside tables,' says Katie.

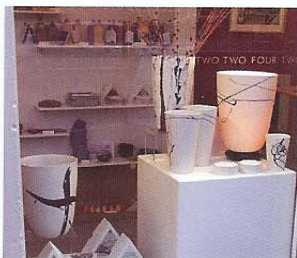
Described by one guest as 'artisans in accommodation', the Livermores are dedicated to showcasing the very best Tasmania has to offer.

'People love to visit new places and return home with a story,' says Katie. 'Here guests are able to enjoy wine from our boutique wine selection and then visit the vineyard themselves. And if they happen to like the print on the wall, they can find it in our showroom and purchase it.'

The reception area and showroom present a rich display of jewellery, ceramics, glassware, books, textiles, photographs and furniture, all locally produced. Many of the items are limited editions unique to TWO FOUR TWO.

'We are very fortunate with the location here,' Katie continues. 'The streetscape is ideal for us, with a choice of popular cafés and plenty of passing traffic. The development of this area in Charles Street has created a very exciting feel.'

'What Alan and I love most about what we do is the people we meet. They come from all parts of the world – from Canada to Puerto Rico – and we ... really enjoy sharing our love of Tasmania.' ☺



TWO FOUR TWO
 242 Charles St, Launceston, 7250
 E-mail: stay@twofourtwo.com.au
 Web: www.twofourtwo.com.au
 Phone: 03 6331 9242

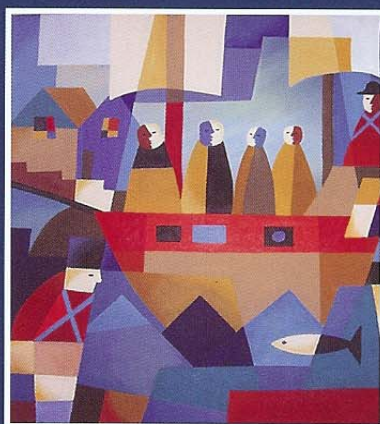


Fine Tasmanian design ... and hospitality

You never know who it might help
A bequest is one way you can help give hope to future generations.

Support Tasmanians coping with cancer

Call us today to find out more on
1300 65 65 85
 or visit www.cancertas.org.au



WELLINGTON GALLERY
 Fine Art since 1976

Located in the foothills of Mt Wellington this spacious gallery exhibits contemporary paintings in oil, watercolour and acrylics by established and emerging Tasmanian artists.

Gallery space for hire

190 Strickland Avenue South Hobart Tasmania 7004
 phone: 03 6223 6643 email: tandersen@iprimus.com.au